

## Increased Freedom From Glasses At Age 40 And Beyond

The Advanced CustomVue Monovision procedure\* is the first and only FDA-approved wavefront-guided monovision treatment to correct both near and distance vision in presbyopic patients with low to moderate myopia, with or without astigmatism.

### PATIENT ADVANTAGES

The Advanced CustomVue Monovision procedure:

- Provides a potentially superior option to corrective glasses or contact lenses for myopic presbyopia patients
- Promotes a youthful self-image by increasing the ability to read fine print without glasses
- Can potentially offer increased spectacle independence across a range of distances to patients 40 years and older

### PROVEN SAFE AND EFFECTIVE<sup>1</sup>

- Physicians and their patients can now benefit from the safety and confidence that come from making a 100% Advanced CustomVue treatment decision
- More than 31 percent of eligible myopic presbyopia patients may benefit from this procedure<sup>2</sup>
- Treatment results in a high level of patient satisfaction

Twelve months after being treated with the Advanced CustomVue Monovision procedure:

- When asked if they would have the Advanced CustomVue Monovision procedure again, 98 percent of study participants said they would
- 99 percent of study participants achieved binocular uncorrected near visual acuity of 20/25 or better
- 97 percent of study participants achieved binocular uncorrected distance visual acuity of 20/25 or better
- 100 percent of study participants achieved binocular uncorrected intermediate visual acuity of 20/32 or better
- 86 percent of study participants achieved 20/20 or better for both uncorrected near and uncorrected distance visual acuity

### ABOUT ADVANCED CUSTOMVUE MONOVISION

The Advanced CustomVue Monovision procedure delivers all the benefits physicians and patients have come to expect from the Advanced CustomVue treatment. It combines Registration + Resolution,<sup>TM</sup> resulting in the most effective laser vision correction treatment available today, as determined by a 2007 annual refractive surgeon survey.<sup>3</sup> The wavefront-guided procedure delivers more precise measurement, allowing more individualized treatments that are tailored to the unique visual needs of patients.

- Iris Registration technology with cyclotorsional registration and pupil centroid shift compensation ensures that the treatment is placed correctly on the eye
- The Fourier algorithm provides greater precision through higher-resolution wavefront imaging and analysis — 25-times more precise than standard measurements for glasses or contact lenses
- Variable Spot Scanning (VSS<sup>TM</sup>) and Variable Repetition Rate (VRR<sup>®</sup>) technologies, proprietary to AMO, allow the Advanced CustomVue Monovision procedure to deliver overall shortened treatment times with minimal thermal effect, for optimal results

With FDA approval for this monovision procedure, AMO remains uniquely positioned to provide the broadest range of wavefront-guided treatments for any patient interested in laser vision correction and the Advanced CustomVue procedure.

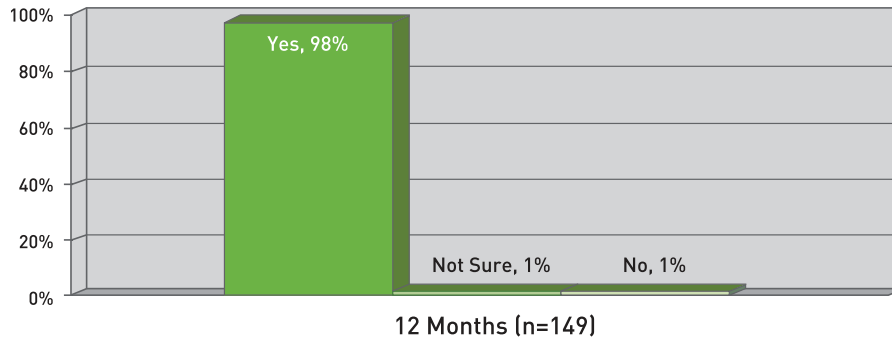
\*The Advanced CustomVue Monovision procedure is an innovative component of the iLASIK<sup>TM</sup> technology suite.



# Advanced CustomVue® Monovision Procedure

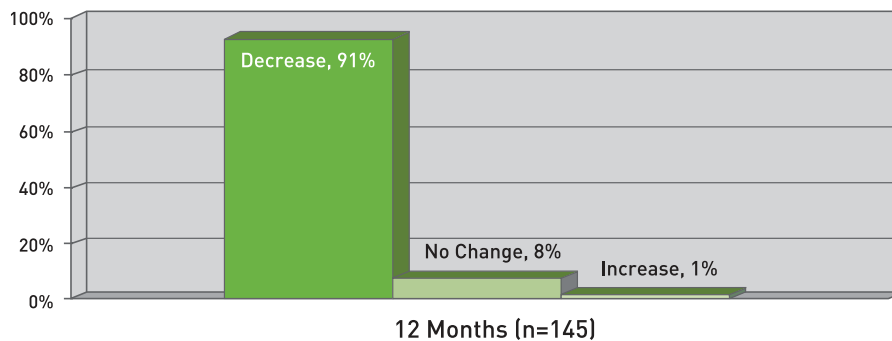
## Satisfaction with Monovision

At 12 months, 98% of subjects would, if given the opportunity, elect to have CustomVue® LASIK Monovision treatment again.



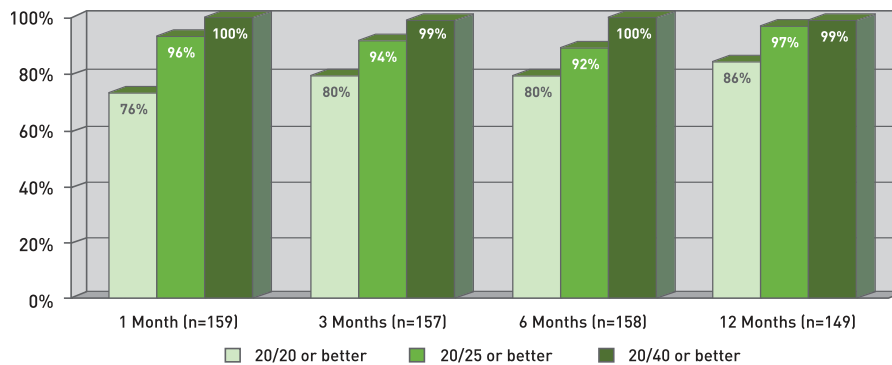
## Spectacle Dependence

At 12 months, 91% of subjects had a reduction in need for spectacles.



## Binocular UCVA: Simultaneous Distance and Near

At 12 months, 86% were 20/20 or better at distance and near.



### References:

1. Advanced CustomVue Procedure for Monovision Clinical Trial, 2006, submitted to the FDA.
2. Market Scope Data, U.S. Vision Population, 21 Years of Age or Older, 2005.
3. Market Scope 2007 Annual Refractive Surgeon Survey.